

MONTHLY MEMBERSHIP PROGRESS REPORT

LOCATION ALBERTA

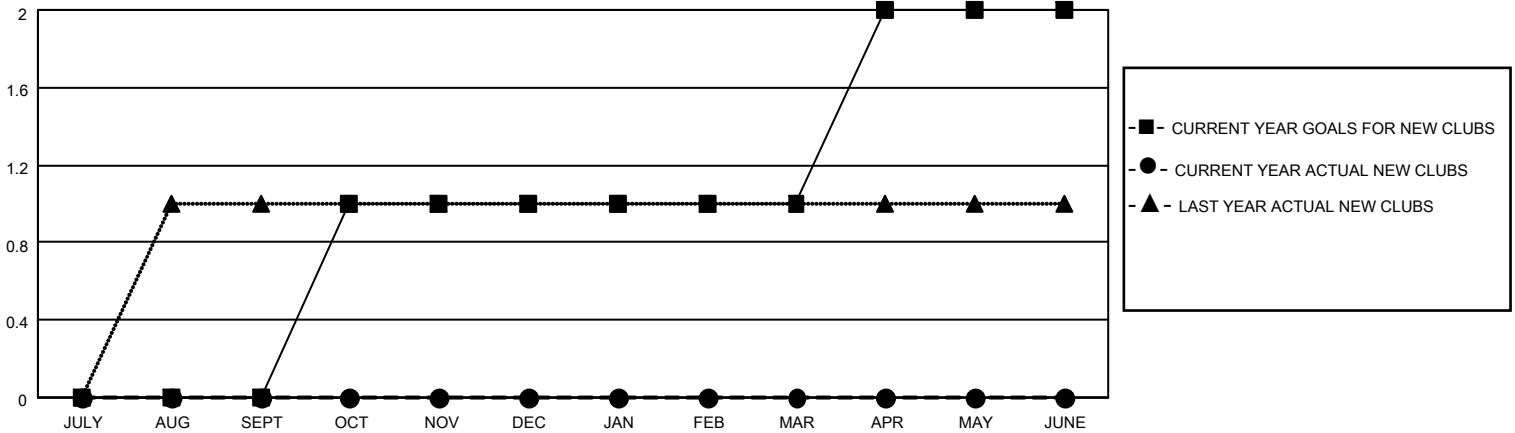
District C 1

Results as of: 5/31/2022

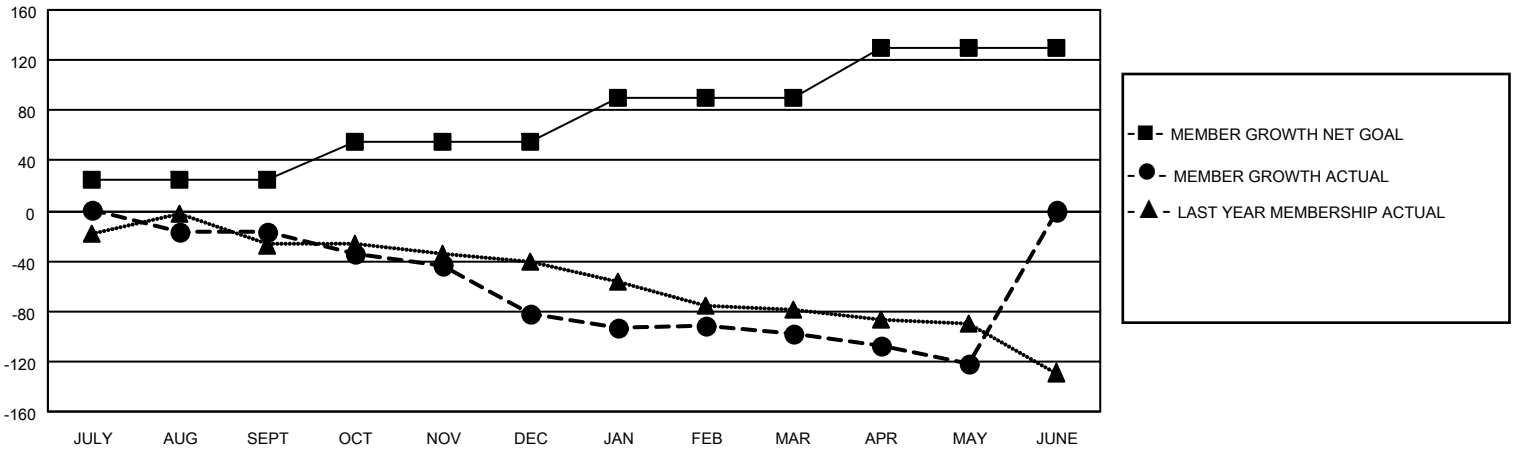
| Clubs | | | |
|-----------------------|---------------|-----------|---------------|
| RESULTS FOR 2021-2022 | | | |
| QUARTER | NEW CLUB GOAL | NEW CLUBS | DROPPED CLUBS |
| JULY/AUG/SEPT | 0 | 0 | 2 |
| OCT/NOV/DEC | 1 | 0 | 2 |
| JAN/FEB/MAR | 0 | 0 | 2 |
| APR/MAY/JUNE | 1 | 0 | 0 |

| Members | | | |
|-----------------------|------------------------|----------------------|---|
| RESULTS FOR 2021-2022 | | | |
| QUARTER | MEMBER GROWTH NET GOAL | MEMBER GROWTH ACTUAL | DROPPED MEMBERS ACTUAL (including transfers) |
| JULY/AUG/SEPT | 25 | 29 | 42 |
| OCT/NOV/DEC | 30 | 15 | 77 |
| JAN/FEB/MAR | 35 | 70 | 79 |
| APR/MAY/JUNE | 40 | 25 | 47 |

GOALS AND ACTUAL NEW CLUBS CUMULATIVE



GOALS AND ACTUAL MEMBERS CUMULATIVE



DROPPED CLUBS: 6

35 CLUBS OF 96 ADDED 1 OR MORE NEW MEMBERS

GENDER DISTRIBUTION

| | |
|----------------------|----------------|
| MALE | 1,029 (62.59%) |
| FEMALE | 615 (37.41%) |
| NON BINARY | 0 (0.00%) |
| PREFER NOT TO ANSWER | 0 (0.00%) |

DROPPED MEMBERS

[CLICK HERE FOR CUMULATIVE MEMBERSHIP DATA](#)

| | |
|----------------|------------|
| DECEASED | 25 |
| CLUB CANCELLED | 32 |
| OTHER | 188 |
| TOTAL | 245 |

| | |
|---------------------------------|-----|
| TOTAL FAMILY UNIT MEMBERS | 312 |
| FAMILY MEMBERS PAYING HALF DUES | 158 |